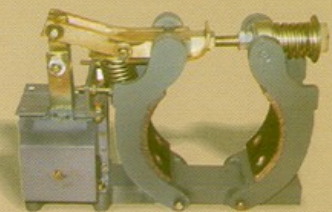
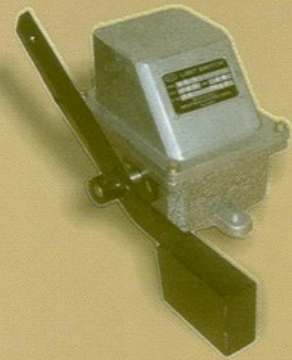




SINCE 1984

ELECTROMECH
ENGINEERS

ISO Certified 9001:2008



Electromagnetic
Brakes &
Switches

About Electromech Engineers



We are the first and leading Manufacturers of electromagnetic brakes in north India, it has been established by Mr. Baljit Singh from the very beginning in the year 1984 and the journey still continues, we cover across 70-80 clients all over India as well as abroad. Captivating the needs of industrial supplies we, Electromech Engineers (ISO CERTIFIED 9001:2008), have carved a niche for ourselves in this competitive market. Our company is working as a leading manufacturers, suppliers and exporters of Electromagnetic Brakes (AC BRAKES, DC BRAKES, SHOE TYPE BRAKES, THRUSTOR BRAKES, FLAME PROOF AC BRAKES) SWITCHES (LEVER TYPE LIMIT SWITCHES, GRAVITY LIMIT SWITCHES, ROTARY LIMIT SWITCHES) & CLUTCHES

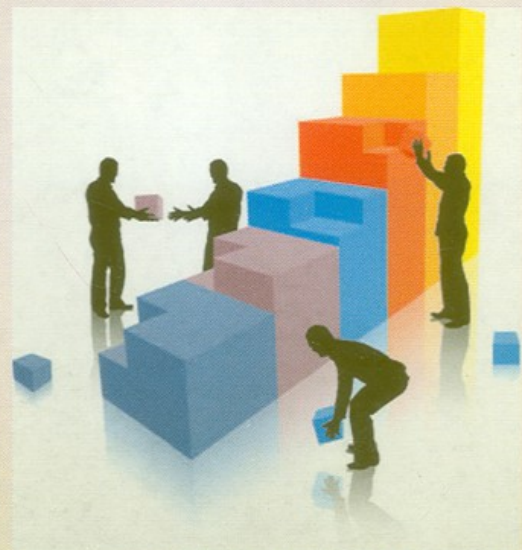
ABOUT ELECTROMAGNETIC BRAKES

These brakes are used in cranes, Hoists, Lifts, Construction machines & other machine tools.

The brake, provided by us, is ideal to hold the load in the same position when the crane is OFF. Keeping the view of some losses in mechanism and fluctuation in the line voltage, the brake is selected with 1.5 times of the rated running torque. In case of instantaneous break is required, brake should be selected with 2 to 3 times of the rated running Torque.

Our Team

We are blessed with competent team of staffs who help us in manufacturing quality range that match to clients requirements perfectly. The team has built strong link with valued clients that help them in understanding their needs and come up with the range accordingly. The range includes Shoe Type Brakes, AC Brakes, DC Brakes, Rotary Switch etc. Our team of professionals comprises Engineers, Sales personnel, Quality inspectors, Procuring agents and other Skilled workers. Our team of professionals has deep knowledge of the market. Moreover, we provide regular training sessions to them to make sure that they abreast to latest fashion trend.



AC Disc Brake

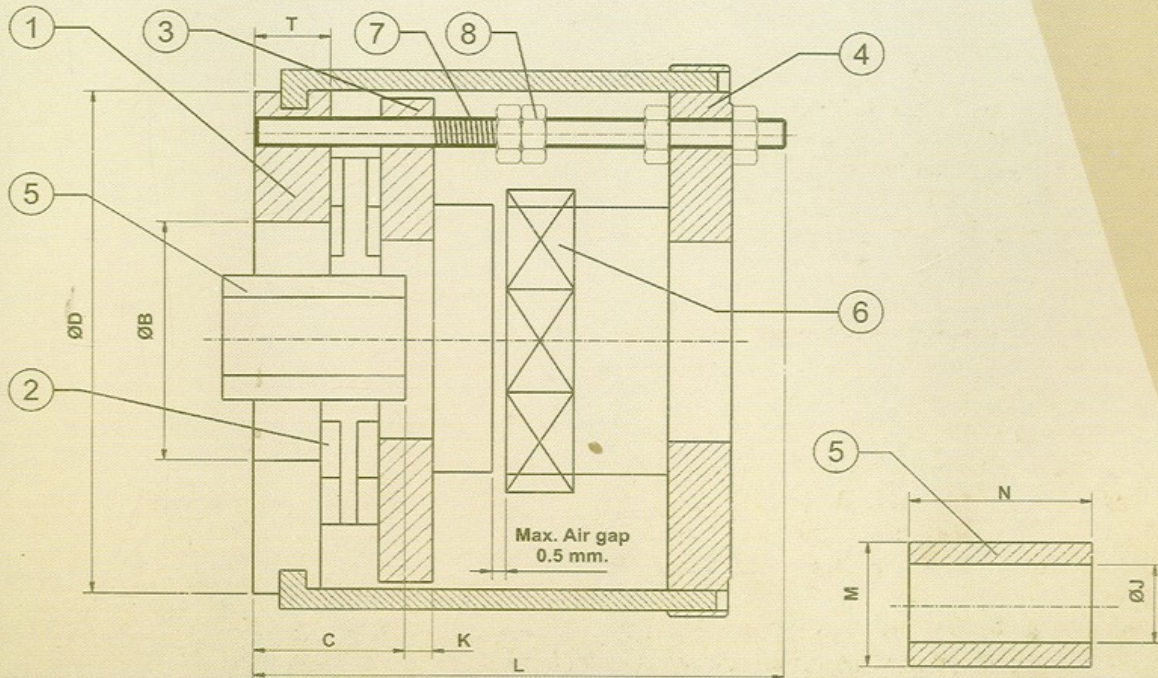


We are engaged in manufacturing, exporting and supplying a wide range of AC Disc Brake that is designed in various specifications in order to meet various requirements of the clients. It is widely used in power stations, mining steel industries, small cranes, conveyors and machine tools. In order to design the offered product, we make use of optimum quality basic parts and sound techniques by our skilled professionals. In addition to this, we are offering our range in various technical specifications at market leading prices. These are directly mounted on the motor hence no foundation is required. It consist of iron plates and liners disc with square hole in the center. It is keyed to the motor shaft and the liner disc is free on the square shaft. Liner disc is gripped between two plates with spring pressure. When current is supplied to the brake, pressure plate is attracted by electromagnet against spring pressure thereby releasing the liner disc. Thus brake is 'OFF'. Once brake is set, it does not require adjustment or maintenance. As friction liner wears, then Air gap is required to be maintained periodically. These are available in 220/415 or any desired voltage.



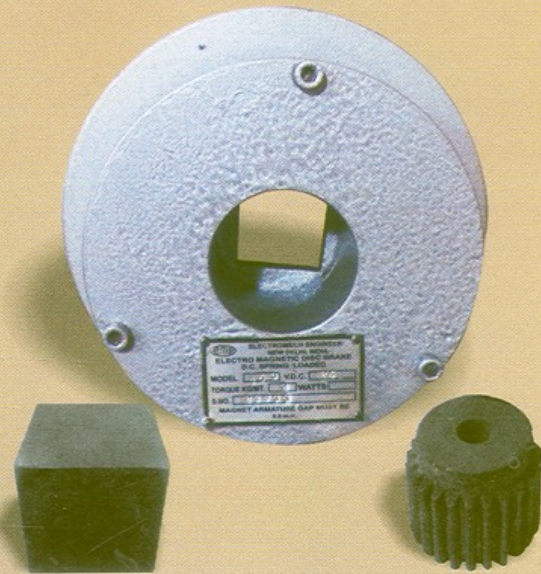
Features:

- ❖ Dimensional accuracy
- ❖ Durability
- ❖ Optimum performance



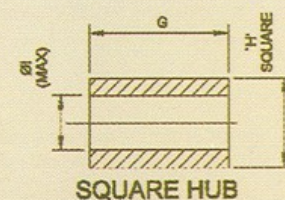
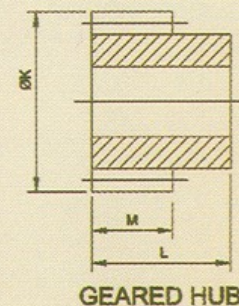
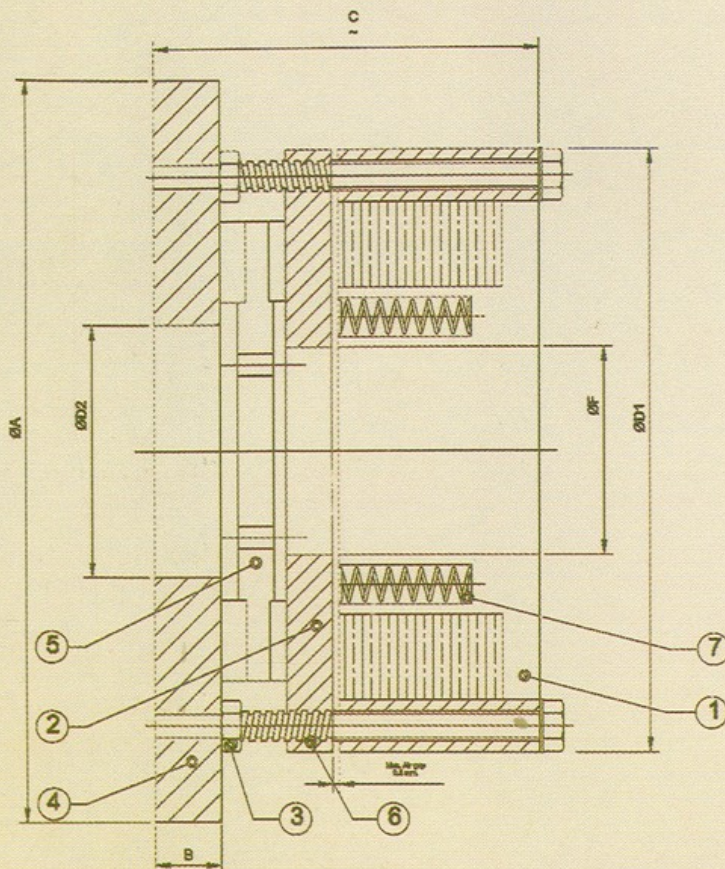
DC Disc Brake

Backed by a team of experienced professionals, we are engaged in manufacturing, exporting and supplying superior-quality DC Brake. The offered product finds application in various rolling mills and textile industries. It is designed using optimum quality factory inputs and sophisticated machinery. Apart from this, we thoroughly check our range during various stages of the production process to ensure that it is in compliance with the global standards and norms. These are exactly as per A.C. Disc brakes. However since they work on DC voltage they need transformer rectifier unit to convert A.C in to D.C. Brakes are available in 24, 42, 90 & 110 V D.C. also available on desired voltages. D.C. brakes are compact in size and comparison to AC brakes and can be manufactured for higher H.P. Whereas AC disc brakes have got limitation.



Features :

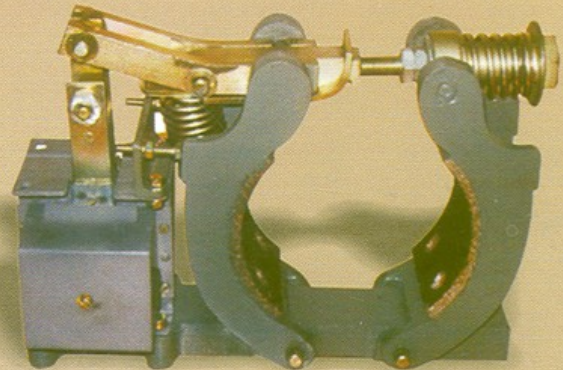
- ✦ Rigid construction
- ✦ High strength
- ✦ Compact design



Shoe Type Brake



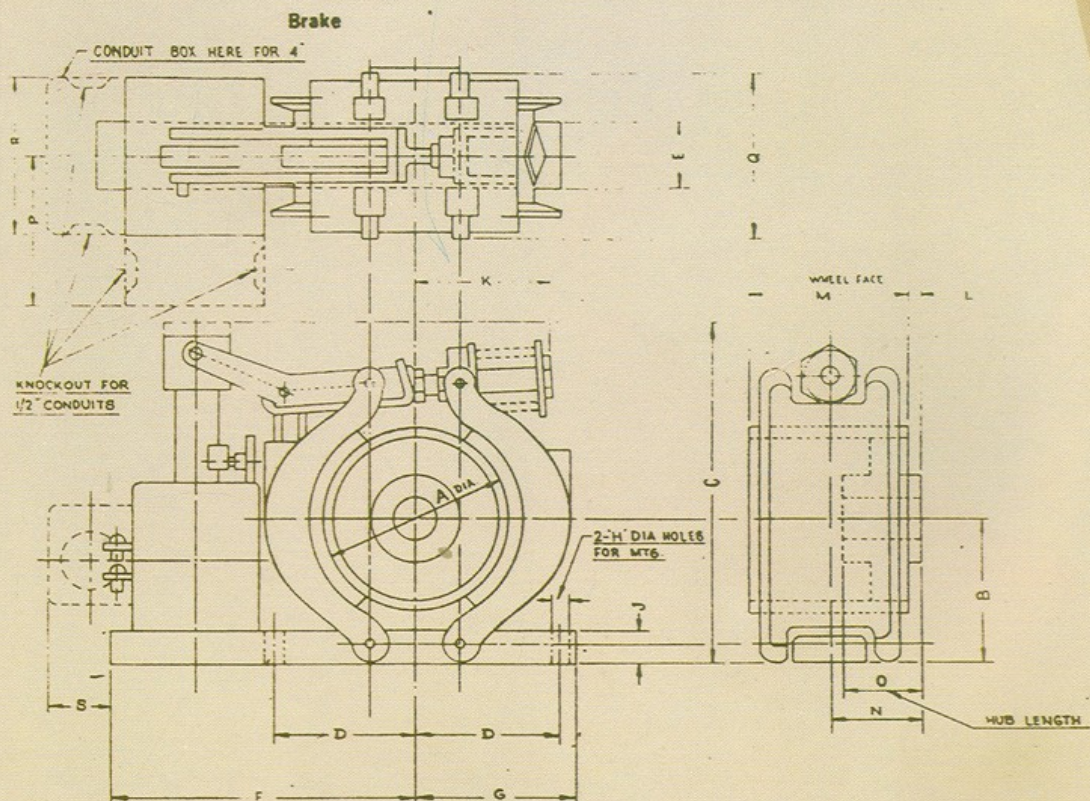
We are a prominent manufacturer, exporter and supplier of an exclusive range of Shoe Type Brake for our precious clients. It is ideal for vertical gear units and work in different multi-speed. The offered range is designed using the best quality raw material and the most advanced machinery under the supervision of skilled professionals. In addition to this, the offered range is tested on various parameters in order to ensure its flawlessness. Clients can avail the offered product from us at the most affordable prices. It consists of two brake shoes, revetted with liners and one solenoid unit. Brake pulley, Coupling or drum is gripped between two shoes by spring pressure. These are available in 220/415 or any desired voltages. Thus brake is 'ON'. When current is supplied to solenoid, the brake is 'OFF'



Features :

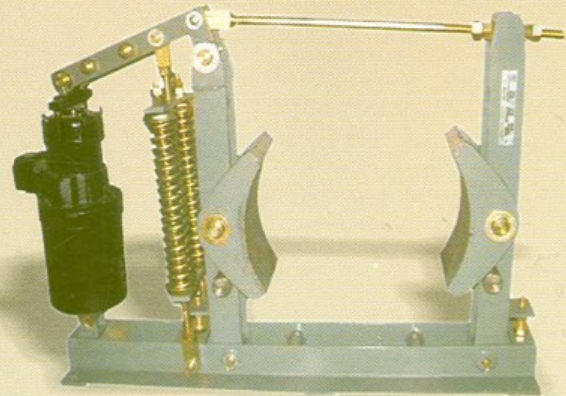
- ◆ Corrosion resistance
- ◆ Rugged construction
- ◆ High strength

Dimensions (mm)



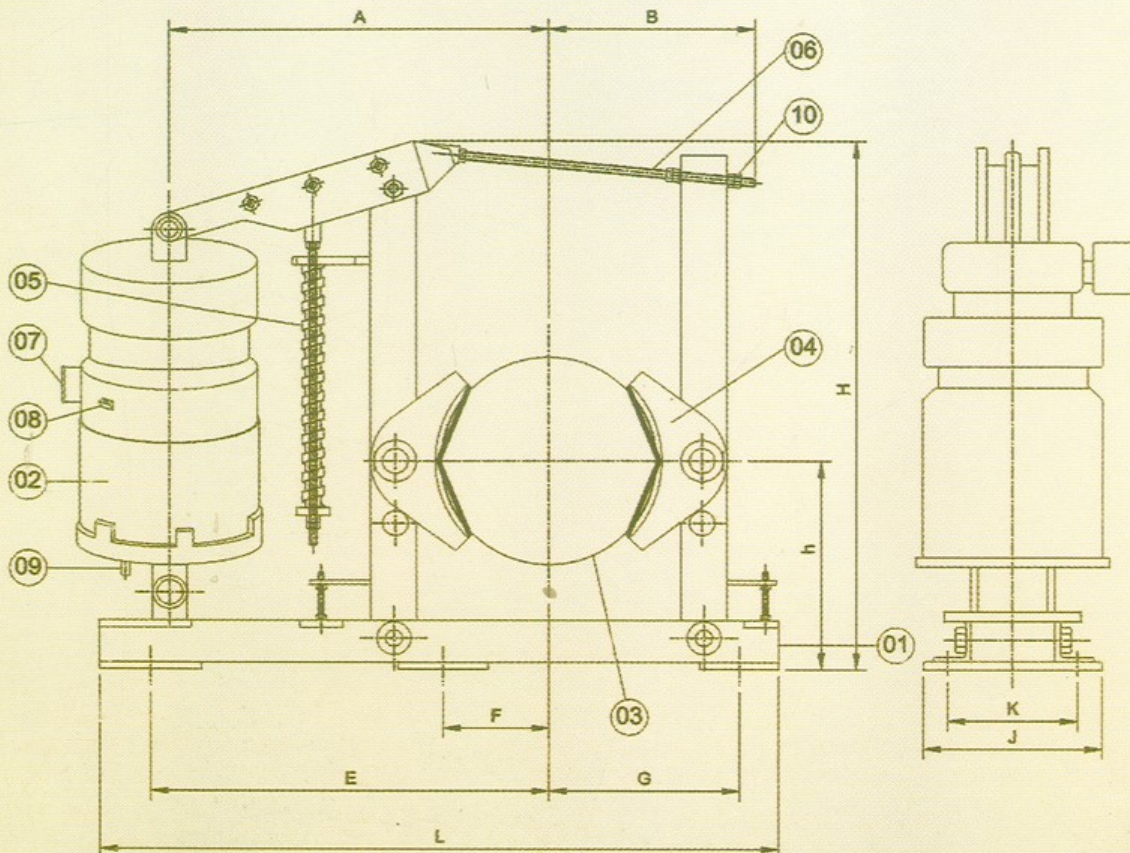
Thruster Brake

We are offering a wide array of Thruster Brake, as we are a well-known manufacturer, exporter and supplier of the product. It is used in heavy industries and is able to perform even in harsh working conditions. The offered product is manufactured using premium quality raw material and contemporary technology to meet various existing industrial quality norms. We customize the offered range to meet the diverse requirements of the clients. Electro Hydraulic Thruster Brake is a heavy duty brake designed to withstand the severe duty conditions imposed by heavy duty machinery in various industries. The Electro Hydraulic Thruster transmits useful thrust through the levers onto the brake shoe thereby releasing the brake. When the power is switched off, the brake is smoothly applied because the hydraulic thrust acting against the spring pressure is gradually reduced.



Features :

- ◇ Easy installation
- ◇ High performance
- ◇ Accurate dimension



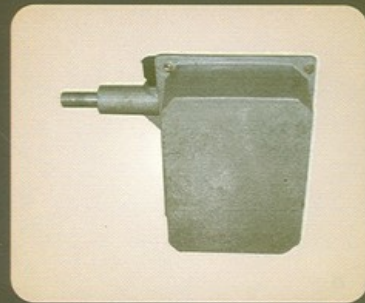
OUR RANGE OF PRODUCT



Lever Limit Switch



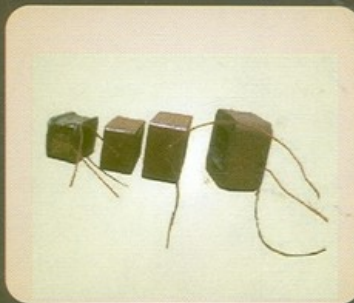
Gravity Limit Switch



Rotary Limit Switch



DC Brake Coil



AC Brake Coil



AC Solenoid Coil



Clutches



Electromagnetic Brakes Disc



SINCE 1984

ELECTROMECH ENGINEERS

ISO Certified 9001:2008

Shed No. 20, DSIDC, Industrial Complex, Dakshinpuri, Delhi - 110062, India

Phone : 91-11-29053808/26057930, Fax : 91-11-29053808

Mobile : 09999937666, 09711442277

Email : electromechengineers@rocketmail.com

Website : www.electromech-engineers.com